



Print this page if you want to replace the misprinted Spider Queen card.



At the start of the combat, each player discards the top card from their deck. The player with the highest discarded power (ignoring text on the card) becomes the starting player and fights this enemy alone. In case of a tie, choose one of those players.

Spider Queen



2 7 3 6 4 5

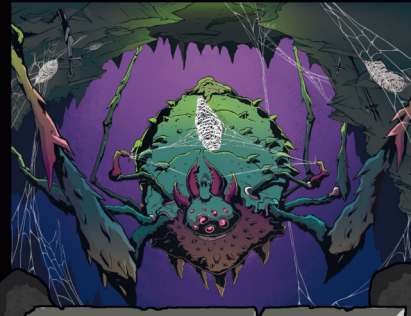


At the start of the combat, each player discards the top three cards from their deck. For each basic card discarded in this way, this enemy gets +1 power.

Spider Queen



2 8 3 7 4 7

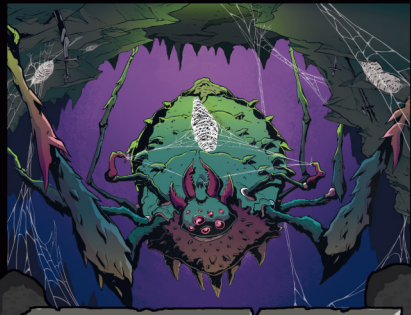


At the start of the combat, each player discards the top three cards from their deck. For each way, this enemy gets +2 power.

Spider Queen



2 10 3 10 4 10



At the start of the combat, the starting player discards the top four cards from their deck. She'll try to weaken us with her poison, waiting until we lack the strength to grasp our weapons.

Spider Queen



2 13 3 13 4 13



HEROES OF Tenefyr



HEROES OF Tenefyr



HEROES OF Tenefyr



HEROES OF Tenefyr

Print this page if you want to re-print all the Spider Queen cards, even though only one was misprinted.